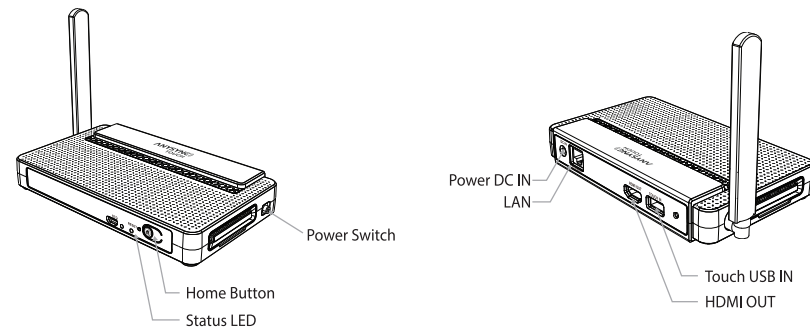
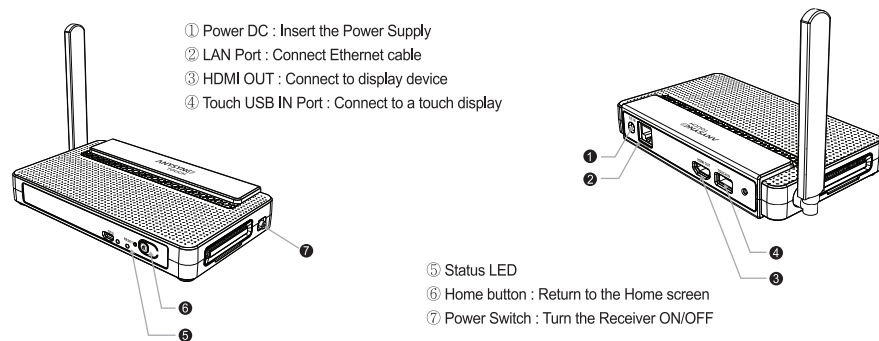


## Product Appearance

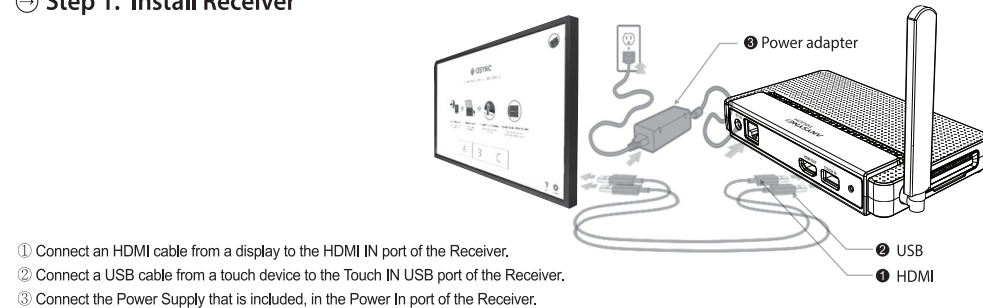


## Features of ANYSYNC Touch Receiver



## Installation

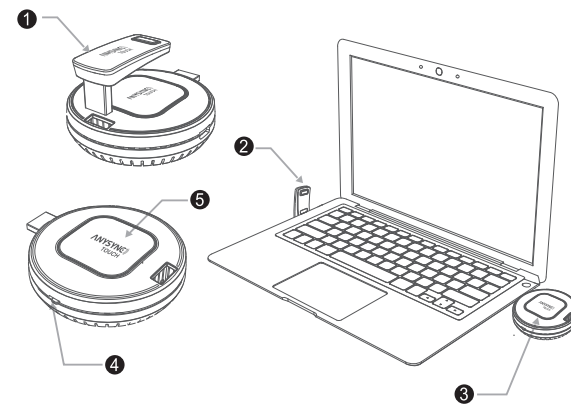
### → Step 1. Install Receiver



- ① Connect an HDMI cable from a display to the HDMI IN port of the Receiver.
- ② Connect a USB cable from a touch device to the Touch IN USB port of the Receiver.
- ③ Connect the Power Supply that is included, in the Power In port of the Receiver.

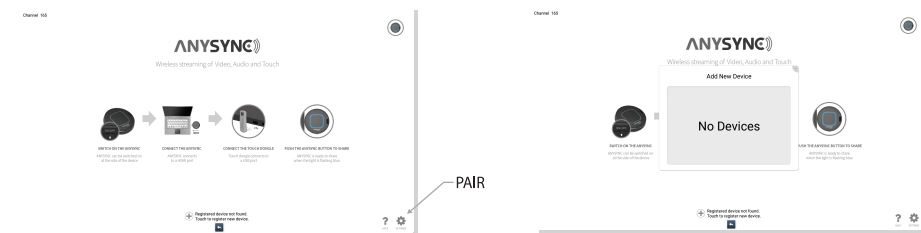
### → Step 2. Install Transmitter

- ① Remove the Touch USB Dongle from the Transmitter.
  - ② Insert the Dongle into the USB In port of your laptop or PC.
  - ③ Connect the Transmitter to the HDMI out port of laptop or PC. Use the HDMI extension cable provided if needed.
  - ④ Slide the power switch to the left to turn power ON and the Status LED will be lit in blue.
  - ⑤ Press the Transmit button and an image will appear on the display device of which the Receiver is installed.
- If multiple Transmitters are connected, the corresponding screen of the Transmitter that has just been clicked will appear, as part of the product's integrated switching function.

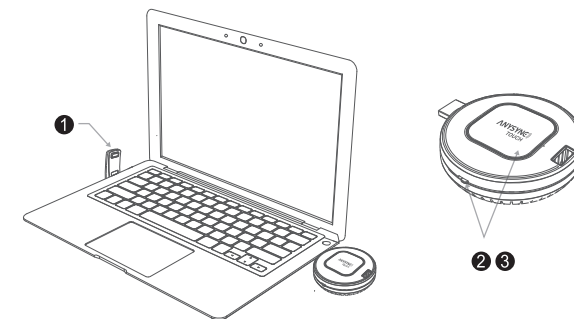


## Pairing Receiver and Transmitters

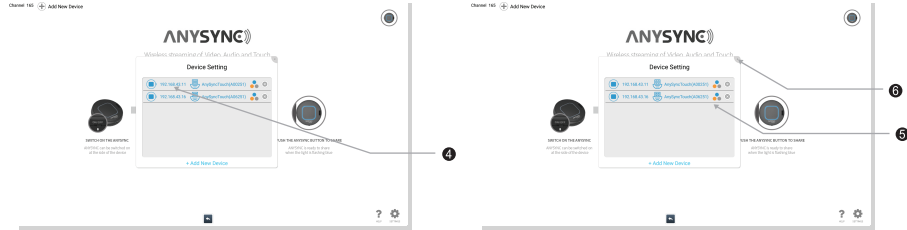
### → 1. First time paring



Pair the transmitter with the Receiver by entering pairing mode in the Settings

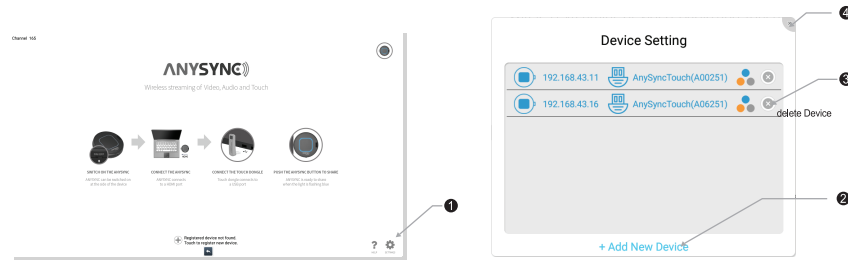


- ① Connect the Touch USB dongle to the USB port of laptop or PC.
- ② Press and hold the Transmit Button, while switching the power switch to ON. Keep holding the Transmit Button for 10 more seconds.
- ③ Wait until the status LED starts flashing blue..



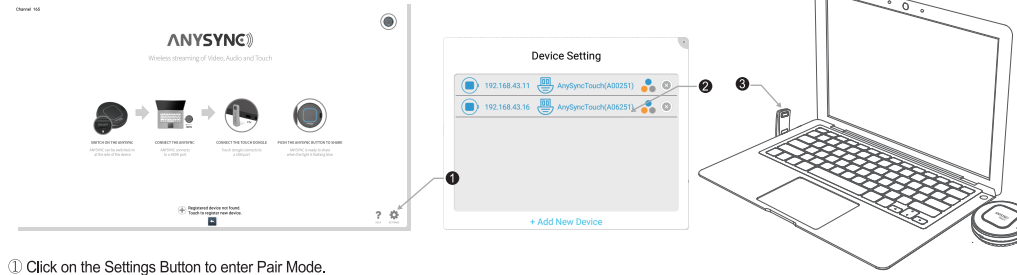
- ④ When paired, the IP address will appear on the Set Mode Check window.
- ⑤ For additional Transmitters, repeat the above procedure.
  - Remove the USB Dongle from laptop upon setup.
  - Upon each new Transmitter paired, please check that a new IP address is added on the Set Mode Check window.
- ⑥ When all Transmitters are paired, click on the X button on top right corner of the Set Mode Check window to exit the setup procedure.

## → 2. Add and remove paired Transmitters

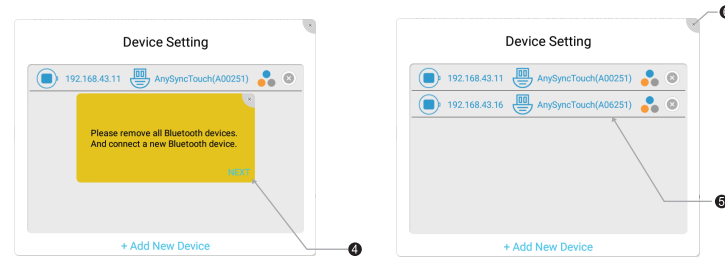


- ① Click on the Settings Button to enter Pair Mode.
- ② Click on the Add New Device at the bottom of the Set Mode Check window to repeat the process of pairing additional Transmitters.
- ③ You can click on the X button on the right of the list of paired Transmitters to delete.
- ④ When all Transmitters are paired, click on the X button on top right corner of the Set Mode Check window to exit the setup procedure.

## → 3. Pair additional USB dongle



- ① Click on the Settings Button to enter Pair Mode.
- ② Click on the Mac address of the Touch USB dongle to re-register within the Set Mode Check window.
- ③ Connect the Touch USB dongle in a laptop to start pairing. (Only one USB dongle shall be connected to laptop for new registration)



- ④ Click on the arrow at lower right corner of the yellow pop-up window.
- ⑤ Check the Mac address of newly registered Touch USB dongle.
- ⑥ Click on the X button on top right corner of the Set Mode Check window to exit the setup procedure.

## Notice

The distance available for wireless application may vary depending on the user environment.  
 The wireless device in use may be subjected to radio interference during operation.  
 The screen in part may not show if the aspect ratio of image being replayed does not match with that of the monitor.  
 Turn power OFF of the product and of the Transmitter when not in use.

# ANYSYNC Touch User Manual